

Dell Client Command Suite

Deploy



Monitor



Update



Øivind Staveli, Kace SE Nordic



A day in the life of Phil, the IT professional



8AM



The morning challenge:

200 new systems need to be handed to new employees this afternoon after their new hire orientation.

1PM



The afternoon challenge:

Check on systems deployed six months ago across the globe. The IT admin who set up these systems is out sick.

8AM

9AM

10AM

11AM

12PM

1PM

2PM

3PM

4PM

5PM



Configure:

Phil uses Dell configuration tools to create a template of the BIOS settings he wants before starting the OS deployment. Phil grabs coffee.



Deploy:

With Dell driver CABs, Phil gets a single, customized file with all he needs to deploy the OS. OS deployments are running by 10AM, and PCs are ready to distribute in the afternoon.



Phil enjoys a leisurely lunch. Mmmm... pizza.



Monitor:

Back at the office, Phil uses Dell's monitoring tool to remotely check system health. This is a cinch, but Phil notes that video driver updates are needed.



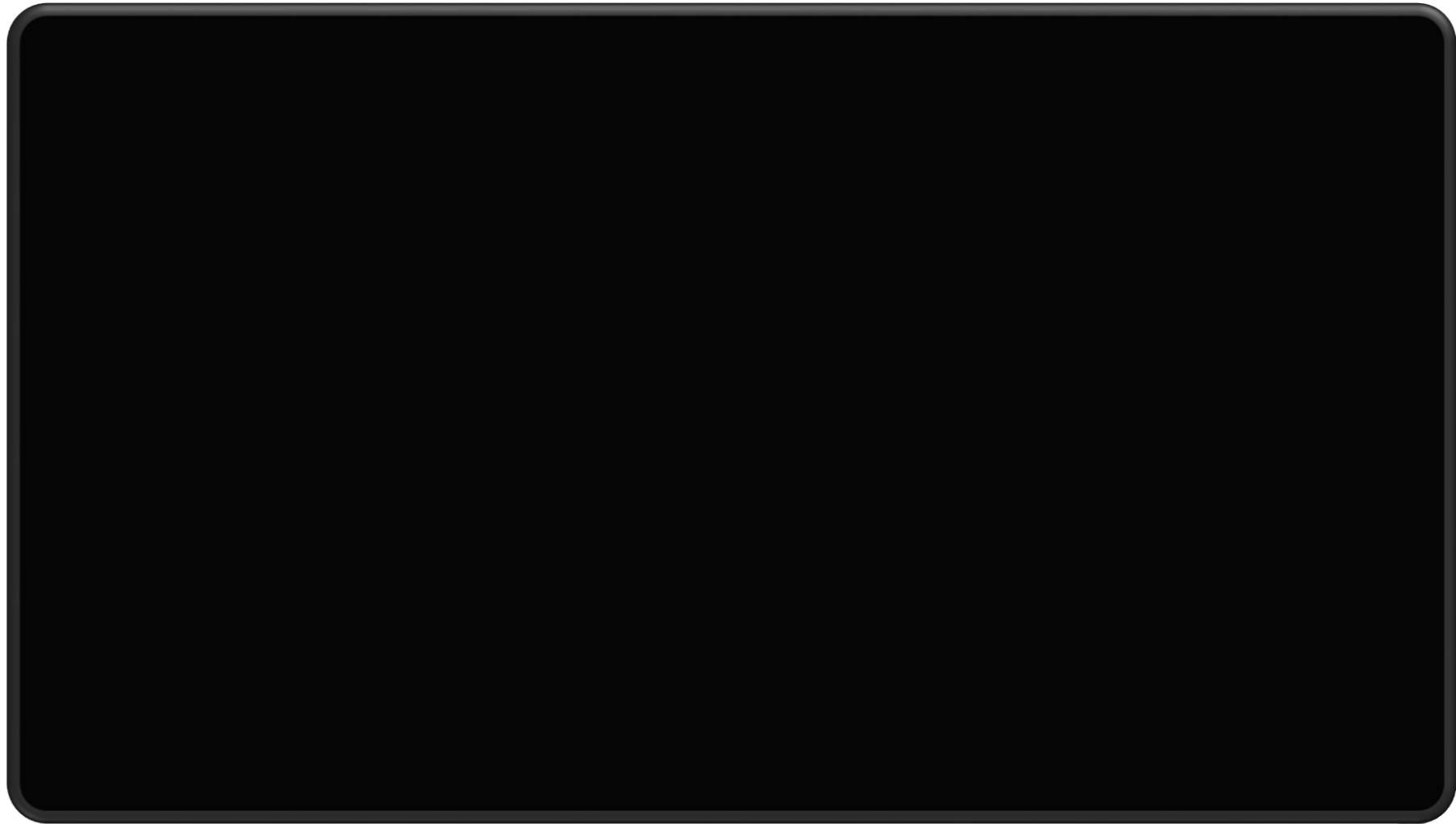
Update:

Driver updates are delivered to Phil, ready for automated deployment. Phil uses vPro extensions to ensure the updates reach systems worldwide, even if they're powered off.



Job well done! Phil leaves the office to enjoy Phil Jr.'s soccer game at 5PM.





Dell client systems management solutions difference

Dell delivers the most manageable commercial endpoints in the industry.

Configure & Deploy



Flexible BIOS configuration with reusable templates for automated deployment



Pre-OS BIOS and TPM configuration



Single Deployment Pack for OS Deployment



Published schedules for image refresh planning

Monitor



Best in class integration with Systems Center 2012 and KACE



Remote system health monitoring



Deep inventory information for improved manageability



Remote "out of band" battery management

Update



One to many updates of out of band systems with vPro extensions



Patch management of offline systems



Easy to use tool for automating updates



DASH "Certified"



Updates for up to 5 Generations of PCs



PowerShell integration



Dell Client Command Suite Portfolio

Dell Command Deploy	Driver CABs –for use with any OS deployment tool
Dell Command Configure	GUI based IT admin tool for BIOS setup.
Dell Command Monitor	Agent with deep hardware inventory and health monitoring.
Dell Command Update Catalog	Catalogs of drivers,tools to select and schedule driver, BIOS, and firmware.
Dell Command Update	End-user tool for Drivers, Bios & Firmware
Dell Command Power Manager	End-user tool -allows users to easily customize AC or battery power options
Dell Command Integration Suite for Systems Center 2012	This suite integrates all the key components of the Client Command Suite into Microsoft System Center Configuration Manager 2012
Dell Command Intel® vPro™ Out of Band	Dell Unique vPro Extensions – An Admin tool to conduct out of band BIOS, battery, and HDD management for multiple systems at once.
Dell Command Kace K1000 Express	KACE K1000 System Mgt Appliance Express is a free systems management solution.
Dell Command PowerShell Provider	Extension to Dell Command to PowerShell

www.dell.com/command



Dell Client Command Suite *IS* integrated

Dell Command | Deploy

Dell Command | Monitor

Dell Command | Configure

Dell Command | Update Catalog

Dell Command | Power Manager

Dell Command | Integration Suite
for Systems Center 2012

Dell Command | Intel® vPro™
Out of Band

Dell Command | Update

Dell Command | PowerShell Provider



Microsoft Deployment Toolkit

IBM® Tivoli® Endpoint Manager

Windows Deployment Services

Dell Command | Deploy

It's easy to do some things once, but what about 100x, 1,000x or 10,000x?

Latitude 3150 Windows 8.1 Driver Pack

ENTERPRISE CLIENT - WIKI

Current Driver CAB Summary

Model	Platform	ID	Version	Release Date	Size	Link
Latitude 3150	Windows 8.1	YGD81	A02	06/09/2015	234 MB	Download Now

[Driver CABs Homepage](#) | [Understanding Delta Report](#)



With Dell Driver CABs we do the work of extracting, testing, and bundling by platform

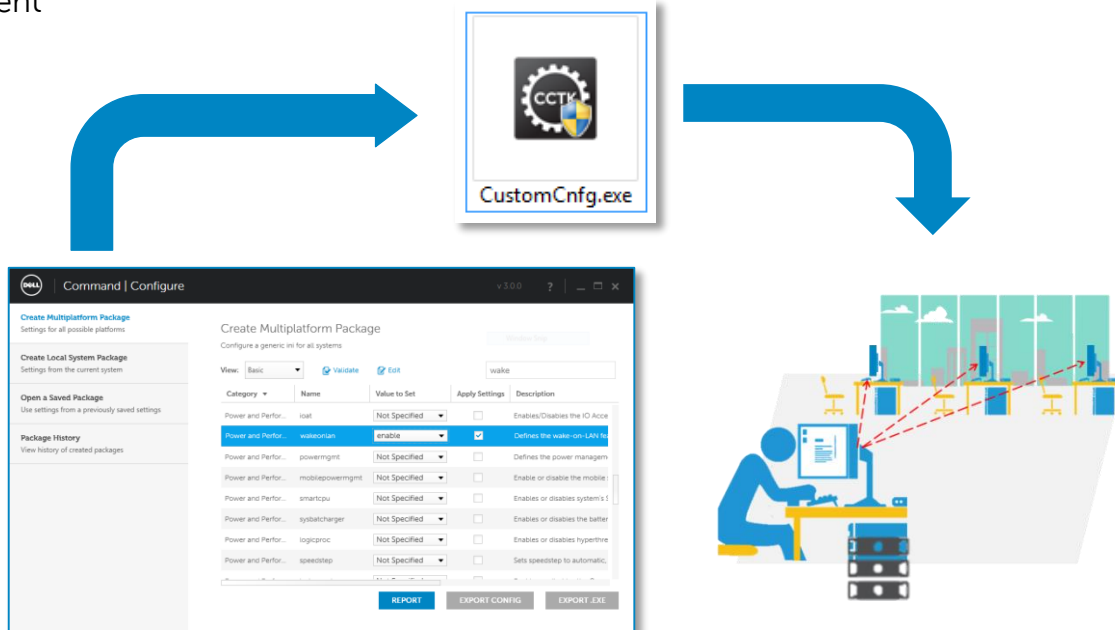


Dell Command | Configure

Simple tool to configure BIOS and TPM for your entire fleet before OS deployment - **Flexible BIOS configuration:**
build reusable templates to automate deployment

Frequently used to:

- Enable the TPM
- Restrict access to USB ports
- Lock the BIOS with BIOS passwords
- Enable Wake-on-LAN
- Enable/disable Webcam



KACE



Microsoft
System Center

LANDesk



Dell Command | Monitor

Your Dell PC has a lot to tell you...are you listening?

Typical customer use cases

Top health state alerts:

- Chassis Intrusion
- Temperature
- Fan
- Voltage
- Processor
- Memory
- Disk
- RAID status

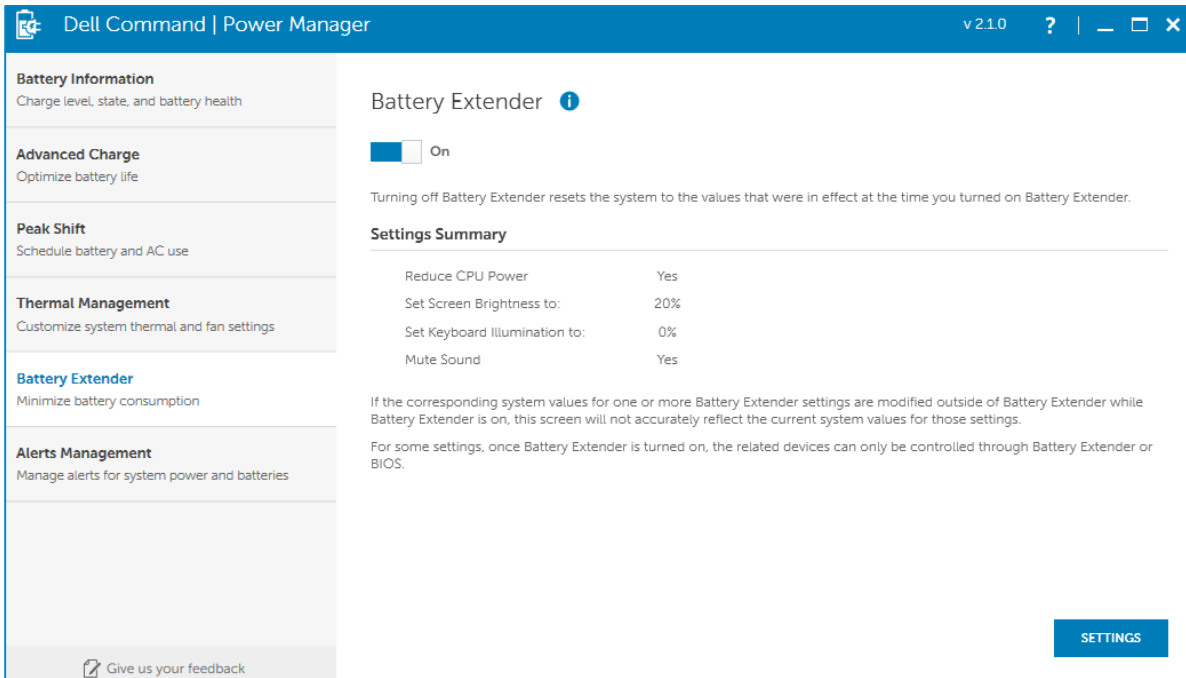
Top items inventoried:

- BIOS Settings
- Asset tag
- Desk display information
- Battery information



Dell Command | Power Manager

A battery management tool that allows for end users to choose the methods desired to personal preferences or their work schedule without sacrificing the capability of the IT admin to control those settings

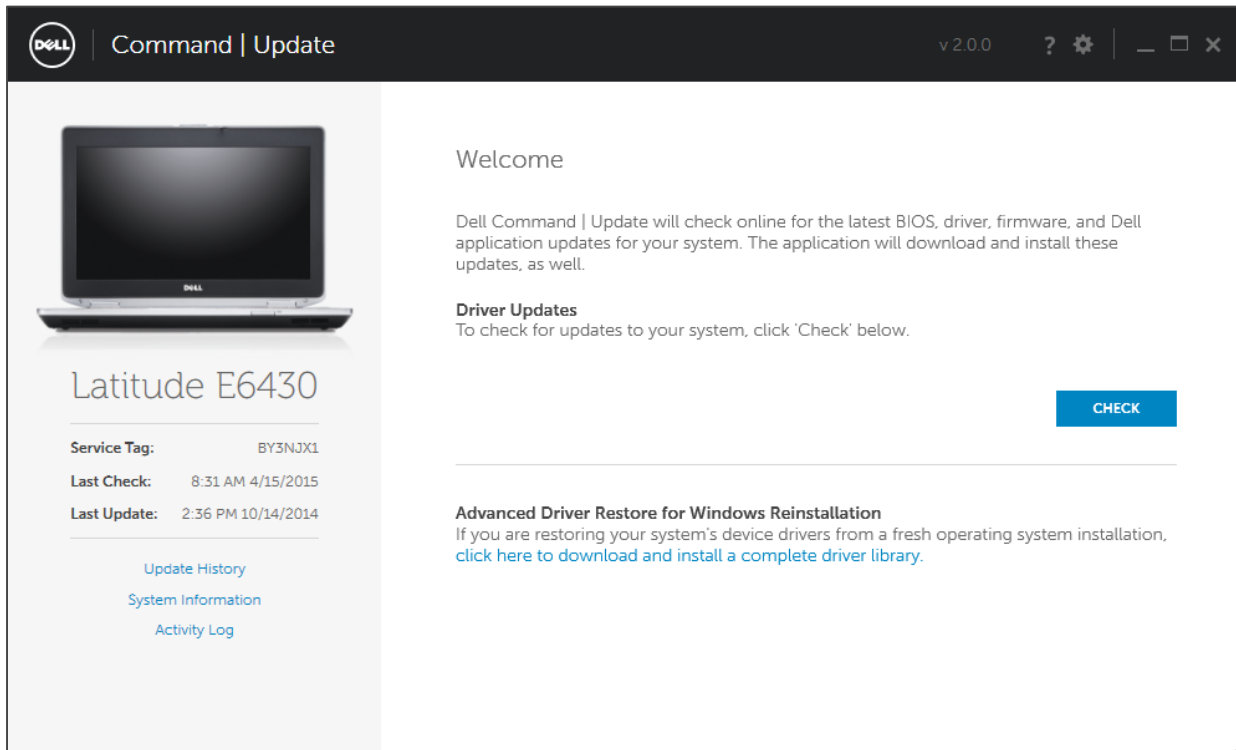


Frequently used to:

- Use Group Policy to enforce Advanced Charge Settings to optimize battery life
- Enable end users to choose the thermal mode



Dell Command | Update



The screenshot shows the Dell Command | Update application window. The title bar includes the Dell logo, the text "Command | Update", and the version "v 2.0.0". On the left, there is a laptop image and the model name "Latitude E6430". Below this, a table displays system information:

Service Tag:	BY3NJX1
Last Check:	8:31 AM 4/15/2015
Last Update:	2:36 PM 10/14/2014

Below the table are links for "Update History", "System Information", and "Activity Log". The main content area has a "Welcome" message, a description of the application's function, and a "Driver Updates" section with a "CHECK" button. At the bottom, there is a section for "Advanced Driver Restore for Windows Reinstallation" with a link to a driver library.

Welcome

Dell Command | Update will check online for the latest BIOS, driver, firmware, and Dell application updates for your system. The application will download and install these updates, as well.

Driver Updates
To check for updates to your system, click 'Check' below.

Latitude E6430

Service Tag:	BY3NJX1
Last Check:	8:31 AM 4/15/2015
Last Update:	2:36 PM 10/14/2014

[Update History](#)
[System Information](#)
[Activity Log](#)

Advanced Driver Restore for Windows Reinstallation
If you are restoring your system's device drivers from a fresh operating system installation, [click here to download and install a complete driver library](#).

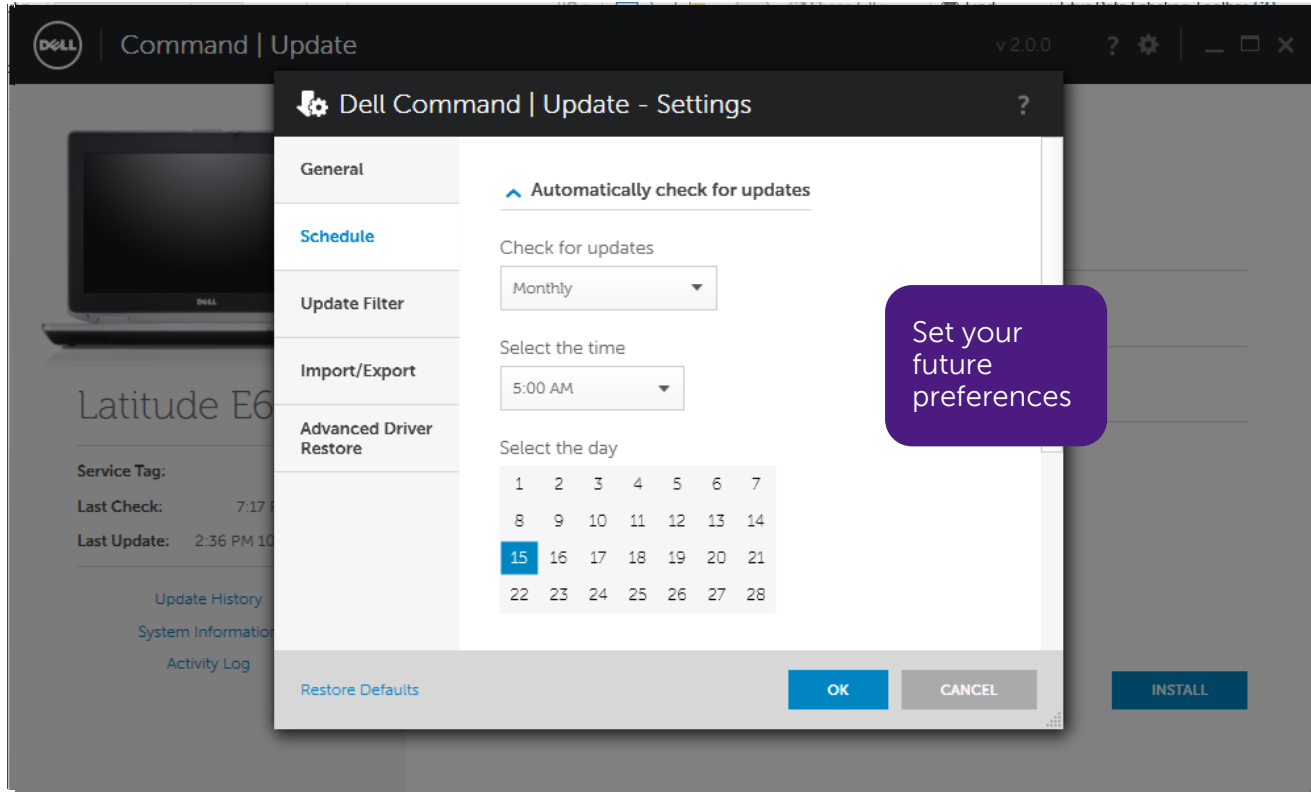
Frequently used to:

- leverages **Dell Command | Update Catalog** for scheduling and installing Dell updates (drivers, BIOS, firmware).
- A local repository of updates can be created with Dell Repository Manager for an IT administrator to manage the updates that are available to end users



Dell Command | Update

a **factory-installed** application that automatically presents Dell updates, eliminating time consuming hunting and pecking while minimizing system disruption

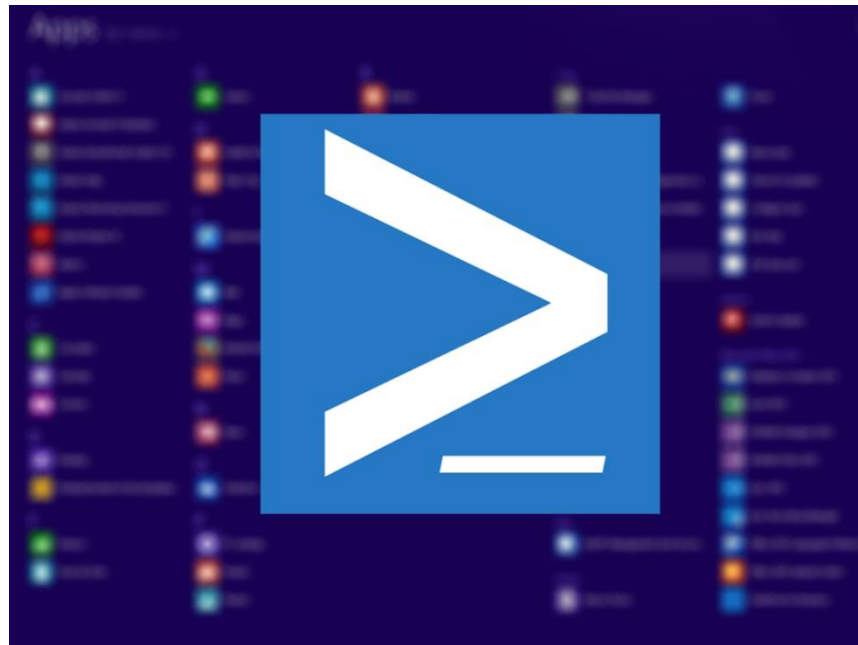


- leverages Dell Command | Update Catalog for scheduling and installing Dell updates (drivers, BIOS, firmware).
- A local repository of updates can be created with Dell Repository Manager for an IT administrator to manage the updates that are available to end users

Dell Command | PowerShell Provider

Furtheres the ability to standardize on this industry-leading scripting preference by enabling IT administrators to dynamically query and modify hardware settings with native PowerShell commands.

- **Dell is the first OEM to offer a PowerShell Provider for BIOS management**
- **Lightweight - works with Windows and WinPE for OS Deployment**
- **Dynamically enable UEFI and Secure boot during OS Deployment**
- **Configure settings that fulfill company security policies (TPM, USB port blocking, BIOS password)**



Dell Command | Intel vPro Out of Band

SCCM Console with Dell Extensions

Command | Intel® vPro™ Out of Band v 4.0.0

USB Provisioning
Setup for Intel® AMT enabled systems

Client Configuration
Update managed client system settings

Power Profile

Boot Order

BIOS Settings

BIOS Passwords

Operations
Perform remote management operations

Reports
Collect and process data on networked systems

Task Queue
Status of recent and pending tasks

BIOS Settings > Select Clients > Schedule Task > Summary

Configure general BIOS settings for clients

Name	Value to Set	Apply Setting
AC Recovery	Power Off ▼	<input type="checkbox"/>
Active Processor Cores	All ▼	<input type="checkbox"/>
Active Thermal Trip Point Memory	63 C ▼	<input type="checkbox"/>
Adjacent Cache Line Prefetch	Enabled ▼	<input type="checkbox"/>
Adjacent Cache Prefetch	Enabled ▼	<input type="checkbox"/>
Allow Non-Admin Password Changes	Enabled ▼	<input type="checkbox"/>
Allow OROMs Keyboard Access	Enabled ▼	<input type="checkbox"/>

Options

- ☐ Continue on unavailable BIOS setting
- ☐ Continue on error
- ☐ Reboot client after applying changes

NEXT

Part of Dell Command | Integration Suite for System Center 2012

75% Less time

to change a single BIOS setting remotely

46% Less time

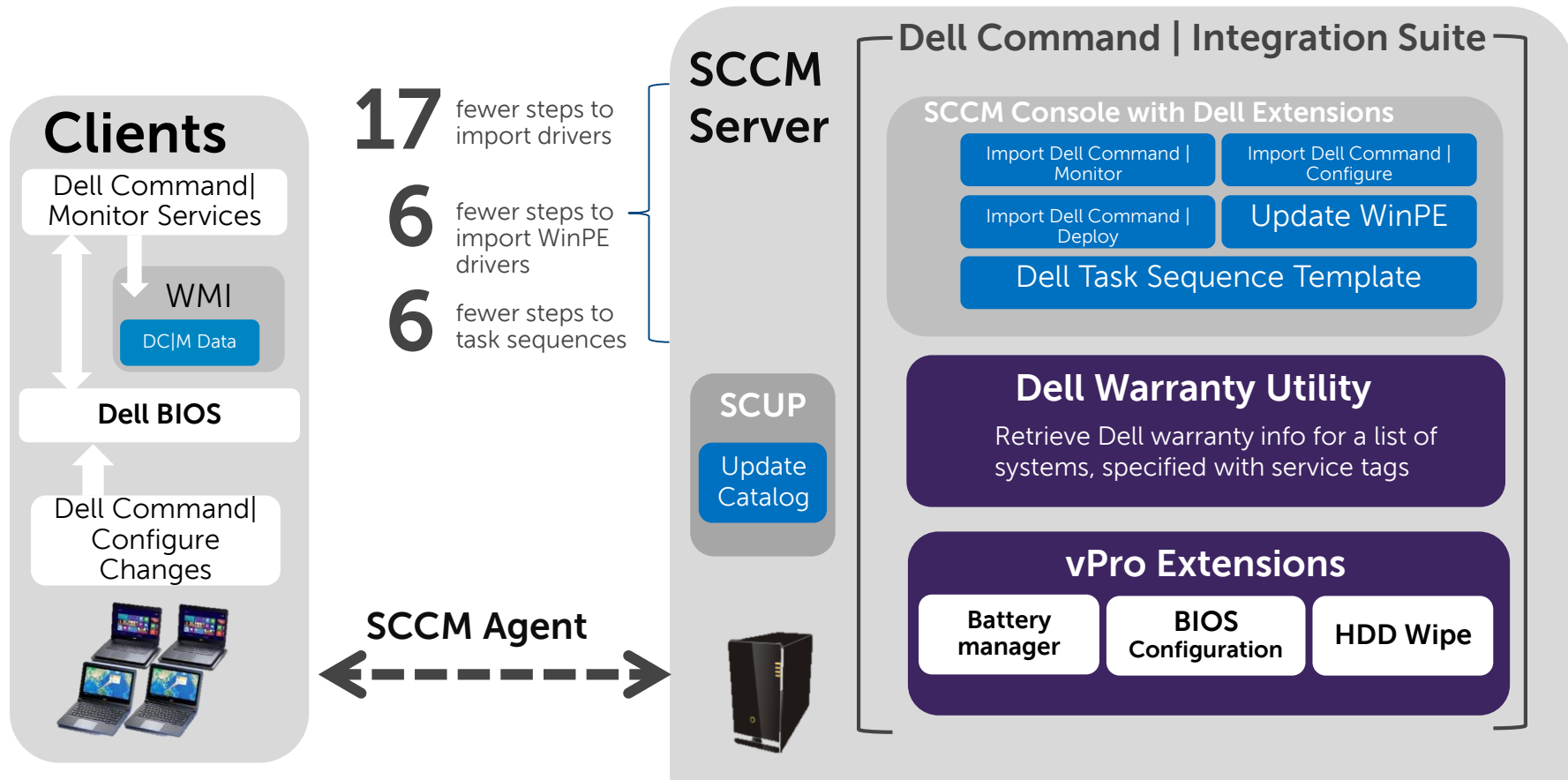
to change 10 BIOS settings remotely

92% Less time

to remotely erase a hard drive



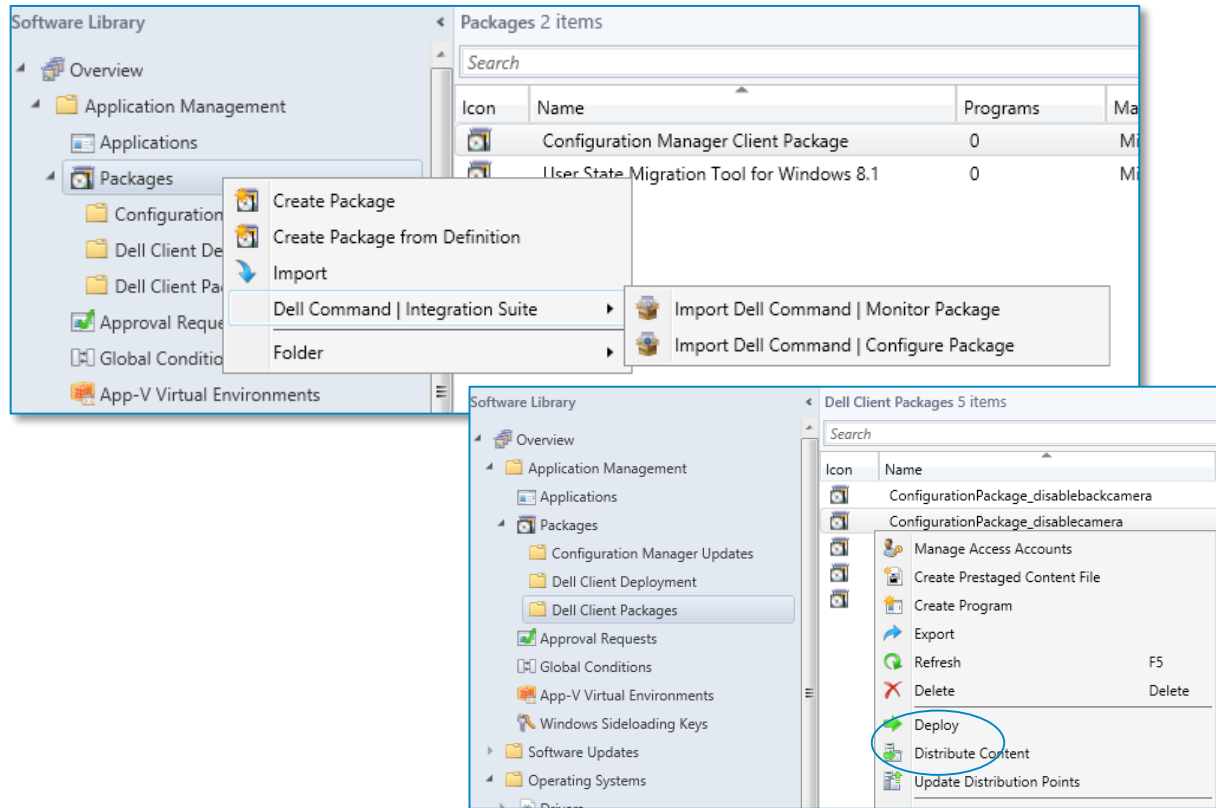
Dell Command | Integration Suite for Systems Center



Dell Command | Integration Suite Snapshot

SCCM Console with Dell Extensions

Command | Configure and **Command | Monitor** Package Import and Deployment



1. Launching the console extensions for either importing the Monitor or Configure package

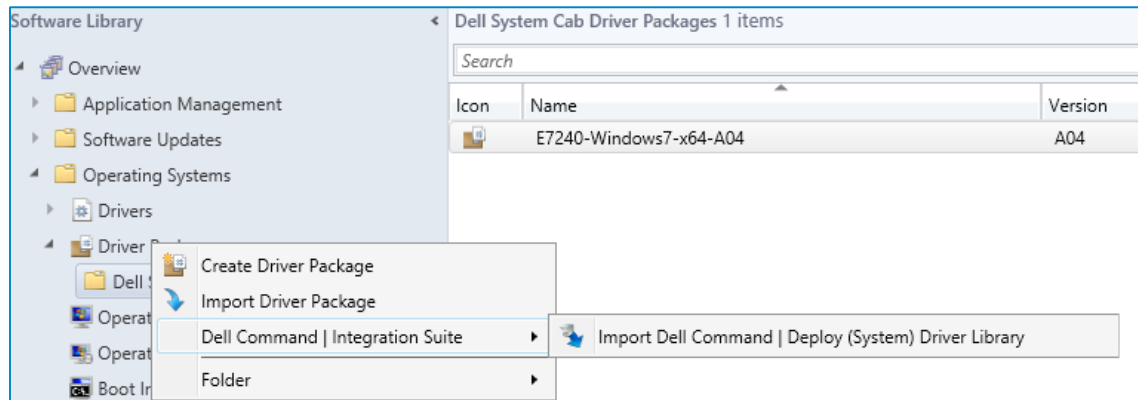
2. After the packages are imported – deploy to your target systems



Dell Command | Integration Suite Snapshot

SCCM Console with Dell Extensions

Command | Deploy - (CABs) System Driver Import



1. Go to TechCenter and download the driver packs/CAB needed
2. Click Deploy to initiate Deploy process – this imports the drivers
3. Drivers are displayed

The screenshot shows the details of the 'E7240-Windows7-x64-A04' driver package, displaying a list of 145 items. The table below represents the data shown in the screenshot.

Icon	Name	Provider	Class	Version Number	Version Date	Categories
[Icon]	2nd Generation Intel(R) Core(TM) Pr...	Intel	System	9.2.0.1033	2/24/2013 8:...	"A04", "DRIVER", "E7240", "WIN7", "X64"
[Icon]	Atheros AR8131 PCI-E Gigabit Ether...	Qualcomm...	Net	2.1.0.21	7/15/2013 1...	"A04", "DRIVER", "E7240", "WIN7", "X64"
[Icon]	Atheros AR8131 PCI-E Gigabit Ether...	Qualcomm...	Net	2.1.0.21	7/15/2013 1...	"A04", "DRIVER", "E7240", "WIN7", "X64"
[Icon]	Bluetooth Audio Device	Qualcomm...	MEDIA	8.0.1.232	7/24/2013 1...	"A04", "DRIVER", "E7240", "WIN7", "X64"
[Icon]	Bluetooth AVRCP Device	Qualcomm...	HIDClass	8.0.0.230	6/20/2013 1...	"A04", "DRIVER", "E7240", "WIN7", "X64"
[Icon]	Bluetooth Fax Modem	Atheros	Modem	6.7.605.302	6/4/2009 10:...	"A04", "DRIVER", "E7240", "WIN7", "X64"
[Icon]	Bluetooth Hard Copy Cable Replace...	Qualcomm...	USB	8.0.0.218	12/17/2012...	"A04", "DRIVER", "E7240", "WIN7", "X64"

Dell Command | KACE K1000 Express

Don't have a system management solution? Give Express a try.

- Free, easy to use, configure and deploy
- PC and Device Inventory and Discovery
- Easy in-place, one click upgrade
- Works on Dell and non-Dell systems
- Build reports
- Community Support, Knowledge Base and Tutorials

1,000 systems for 1 yr.

Manage any Windows system

Unlike competitive solutions, the K1000 Express is optimized to not only manage Dell systems, but also any other Windows systems –even from other manufacturers

- Laptops
- Tablets
- Desktops
- Servers

Summary

Dell.com/command

Deploy



Monitor



Update

